

Financial Support for SLE Church Aug 2024

Introduction

Giving financially is both a wonderful privilege and important responsibility for Christians to generously support the needs and outreach of the Church. By God’s enabling grace, our giving contributes to the growth of His kingdom both locally through SLE Church and around the world.

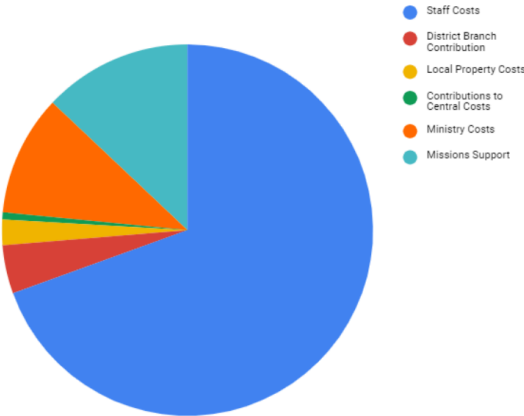
Budget This Year

SLE Church has been blessed with the income required to continue our Kingdom work, and we have a responsibility to use it wisely as faithful stewards.

The largest expenditure is for our staff costs at 70% which was higher than last year with the hiring of a second pastor and the potential of additional ministry trainees and full time staff members. This enables the caring for and equipping of the saints at SLE.

The second largest expenditure is Missions Support. Supporting other mission work within Australia and further out in the rest of the world has and will continue to be an important area of investment. Read more about who we’re supporting at sle.church/missions/.

Budget Summary 2023-2024



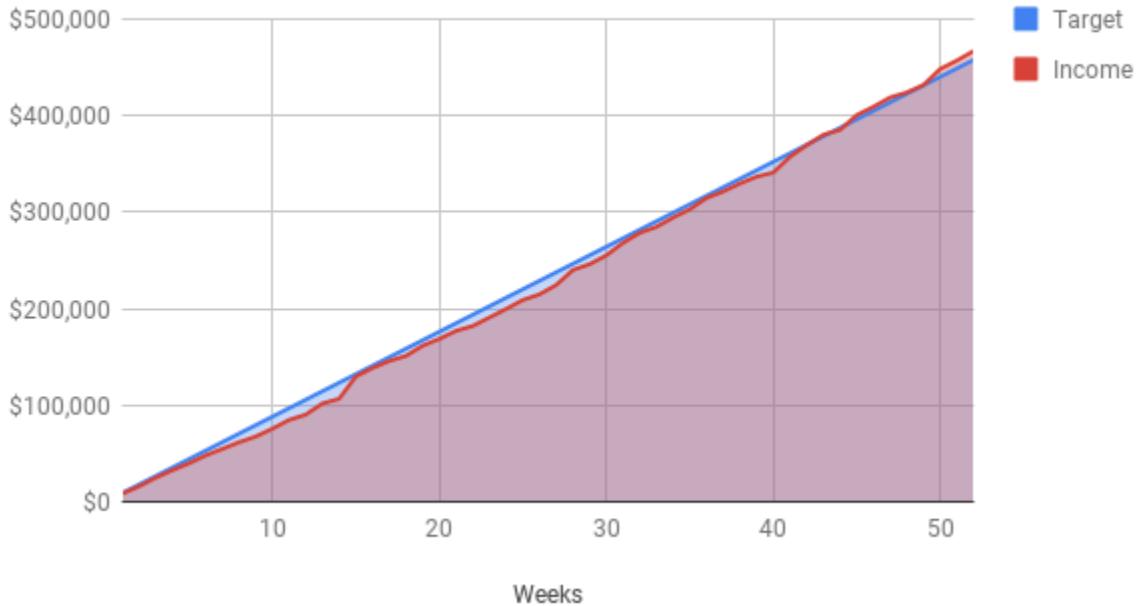
Annual Income

For the past few years, including during the COVID-19 pandemic, our annual income has largely been at target or above for which we are very thankful. We have been encouraged by the increase in regular givers over the first two quarters of this year. Additionally, the number of people giving more than \$1000 per month has slightly increased over the course of this year, while the number of people giving \$500-\$1000 and \$250-500 has approximately doubled.

The chart below shows how our income has been tracking in relation to our budget over the past 12 months. As you can see, we have been below target at multiple times throughout this time period. Of note, the weekly giving target will increase for this financial year from \$8800 to

\$9200 in light of our plans to hire a third full time staff member and potentially support three new ministry trainees in 2025.

SLE Offerings July 2023 - June 2024



Summary

SLE Church continues to seek to steward our finances wisely with a view to fulfilling our vision for 2024 and beyond – to be a community of maturing disciples of Jesus investing in the next generations.

The SLE Church Council continues to carefully prepare and plan a budget that we believe utilises our God given resources. Our encouragement and prayer is for all members and regulars to also continually consider giving in light of the increasing needs of our church. As the cost of living increases, the cost of ministry in our growing church likewise continues to increase as well.

Electronic funds transfer (EFT) is the preferred means to give to SLE Church (our bank details can be found in our weekly bulletin). Each week our income from giving is also published in the bulletin alongside the giving target to provide our attendees with an idea of how we are tracking from week to week.

Where possible monthly donations are preferred in order to reduce administrative overheads.